

A close-up photograph of a hand with blue paint smeared on the palm and fingers, reaching out to touch a large, vibrant abstract painting. The painting features thick, expressive brushstrokes in various colors including purple, green, blue, and white. The word 'Welcome' is overlaid in white text on the right side of the image.

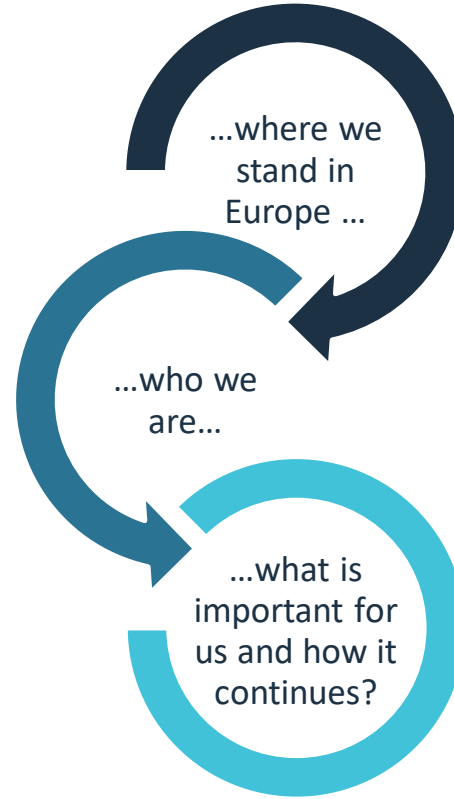
# Welcome

Paul Bomke  
Chief Executive Officer (CEO)  
Pfalzlinikum

**MENTAL  
HEALTH  
NOW!**

**CITIES**RISE

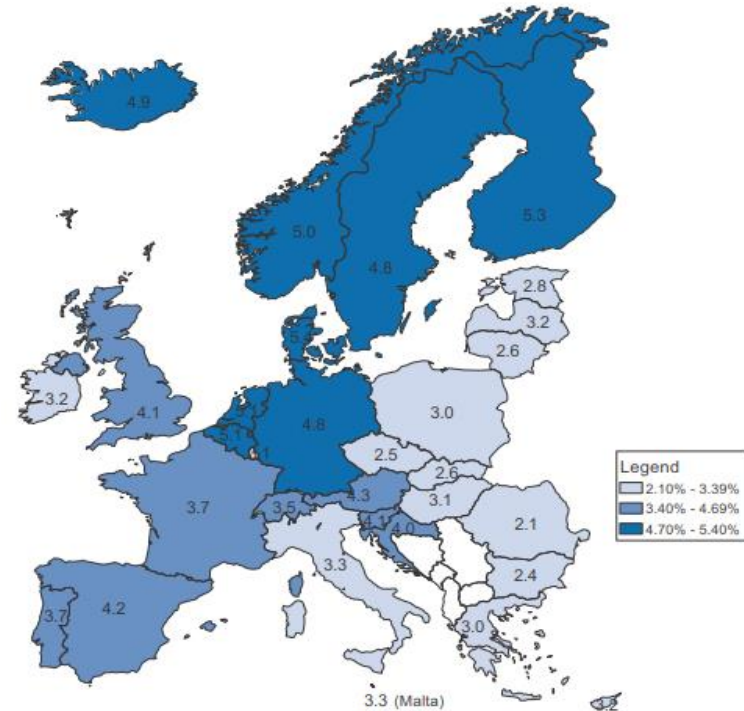
# Agenda



# ... there is much to do in Europe!



Figure 1.6. **Estimated direct and indirect costs related to mental health problems across EU countries**  
As a % of GDP, 2015

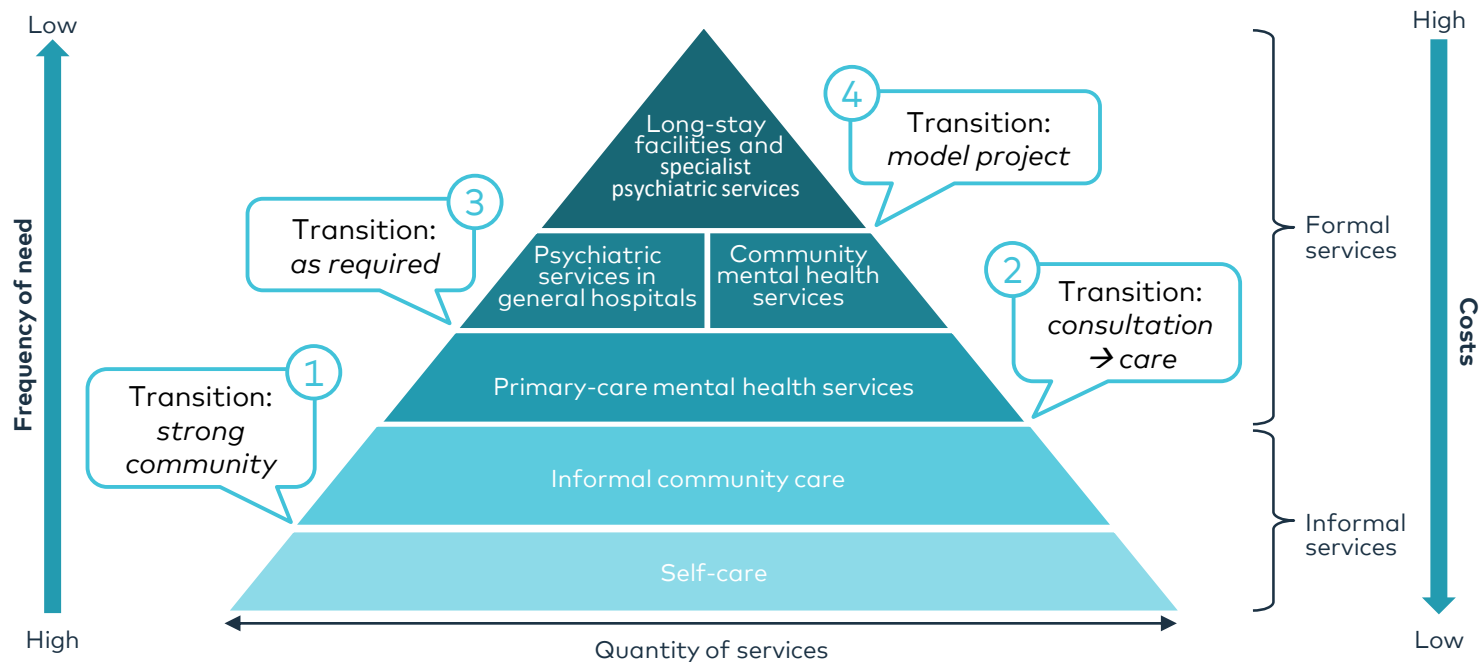


Source: OECD estimates (see Box 1.2 and Table 1.1 for further information).

StatLink <http://dx.doi.org/10.1787/888933834015>

# The conceptual framework<sup>1</sup>

## Create and manage transitions





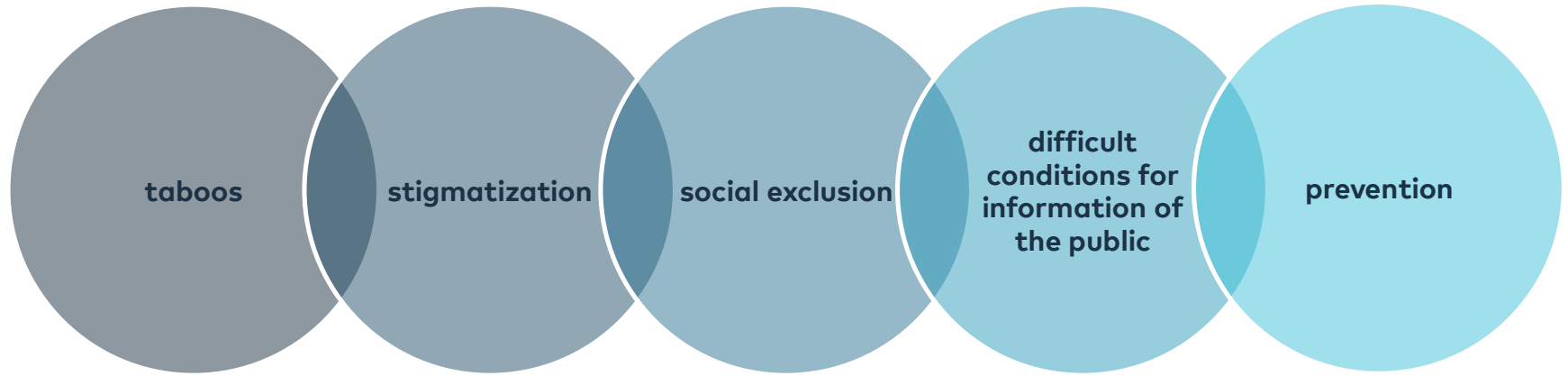
# Our mission...



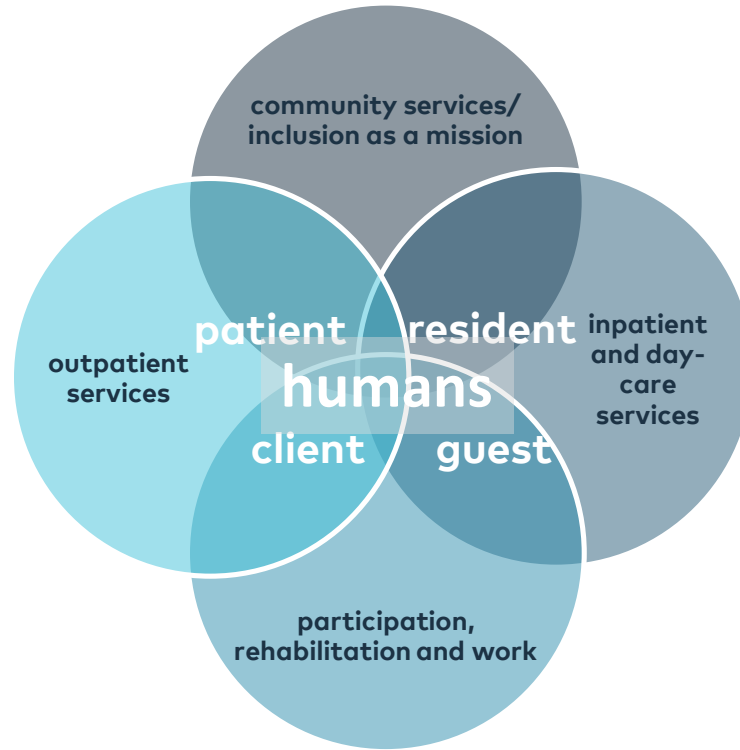
Mental health and Community Services in the Palatinate, Germany



## ...the special status



# Who we are





# Where we are



**2.570**



**166 Mio. €**



**1.179**



## Mandatory regional supply area of the Pfalzlinikum (PsychKHG RLP (23.10.2015)/SGB V)

# Our services of psychiatry, psychotherapy, psychosomatics and neurology in the Palatinate



## **Kusel**

Day-care clinic and psychiatric institutional outpatients' department (PIA), mental health group North-West Palatinate; outpatient psychiatric care

## **Rockenhausen**

(Day-care) clinic and psychiatric institutional outpatients' department (PIA), mental health group North-West Palatinate; outpatient psychiatric care

## **Kaiserslautern**

(Day-care) clinic and psychiatric institutional outpatients' department (PIA), outpatient psychiatric care, mental health group North-West Palatinate

## **Speyer**

Day-care clinic and psychiatric institutional outpatients' department (PIA), outpatient psychiatric care

## **Landau**

Day-care clinic and psychiatric institutional outpatients' department (PIA), outpatient psychiatric care, regional center of psychosomatics in the South Palatinate (RPZ)

## **Wörth**

Day-care clinic and psychiatric institutional outpatients' department (PIA), outpatient psychiatric care

## **Klingenmünster**

Departments for psychiatry and addiction, clinic for geriatric psychiatry, psychosomatics and psychotherapy, clinic for neurology, sleep lab, psychiatric institutional outpatients' departments, outpatient psychiatric care

# Our services of child and youth psychiatry, psychosomatics and psychotherapy in the Palatinate



## **Kaiserslautern**

Day-care clinic, psychiatric institutional outpatients' department and other outpatient services

## **Speyer**

Day-care clinic, psychiatric institutional outpatients' department and other outpatient services

## **Klingenmünster**

Differentiated inpatient services for children and adolescents, psychiatric institutional outpatients' department and other outpatient services

## **Kusel**

Psychiatric institutional outpatients' department

## **Pirmasens**

Day-care clinic, psychiatric institutional outpatients' department and other outpatient services

# Our community based mental health services



## **Speyer**

Participation center and contact point, outpatient services and support

## **Dahn, Rodalben, Klingenmünster, Speyer**

Custom-made outpatient services

## **Bellheim, Dahn, Rodalben, Wörth**

Centers of participation

## **Pirmasens**

Decentralised habitation, assistance for young adults (BjE)

## **Maikammer**

Home for adults (curative education)

## **Klingenmünster**

Differentiated services

## **Landau**

BIFID (= professional integration, training and encouragement)

## **Kaiserslautern**

Living with intensive support



# Forensic treatment of psychiatric offenders in Rhineland-Palatinate, including the services offered by the Pfalzlinikum



## **Andernach (district of Mayen-Koblenz)**

Clinic „Nette-Gut“ for forensic psychiatry\*  
*Forensic treatment of adults*

## **Alzey (Rheinhessen)**

Rheinhessen specialized clinic\*  
*Forensic treatment of adults*

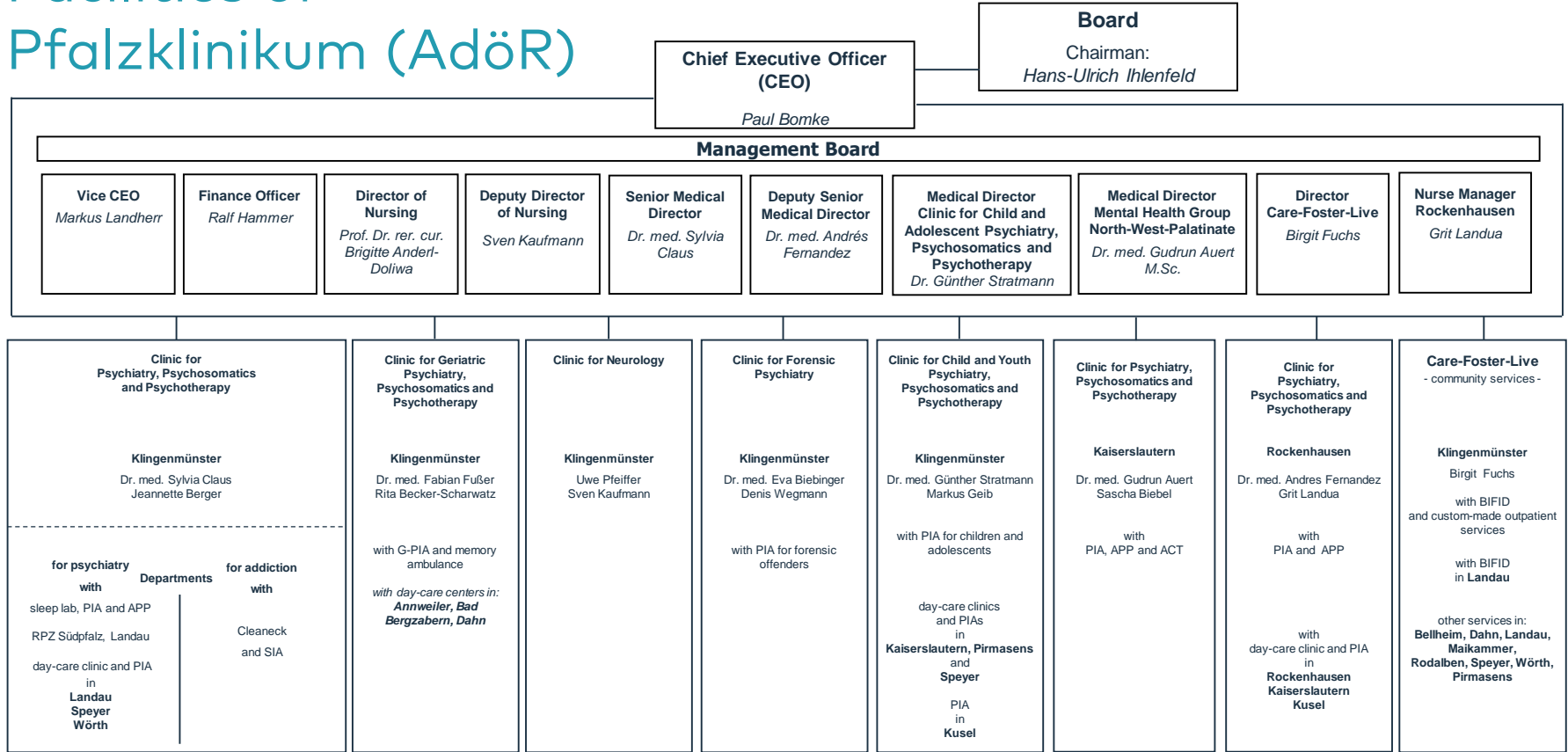
## **Klingenmünster (Südliche Weinstraße)**

Pfalzlinikum for psychiatry and neurology  
*Forensic treatment of adults*

*Forensic treatment of youth  
(responsible for § 63 StGB – criminal code – in the  
Palatinate, responsible for § 64 StGB in Rhineland-  
Palatinate)  
and of adolescents (in Rhineland-Palatinate)*

\* Facilities of the State Hospital

# Facilities of Pfalzlinikum (AdöR)



PIA: psychiatric institutional outpatients' department; RPZ: regional center of psychosomatics in the South-Palatinate; BIFID: professional rehabilitation and integration; SIA: institutional outpatients' department for addiction, G-PIA: gerontopsychiatric institutional outpatients' department; APP: outpatient psychiatric care; ACT: Assertive Community Treatment. \*reference to organisation chart

# What is important for us?



Normal world

Focusing on individual needs

on even handed level

Orientation into the  
Community

Negotiation rather  
than treatment

Home treatment

Deinstitutionalization

Bildquelle: [www.pfalzkrlinikum.de/angebot/ambulanz/aufsuchende-hilfe-nach-mass/](http://www.pfalzkrlinikum.de/angebot/ambulanz/aufsuchende-hilfe-nach-mass/)

# made-to-measure, multi-professional, personal model project at Pfalzkrlinikum

- term of 8 years, starting January 2020.
- biggest model project in Germany\* regarding financial volume and service range.
- coherent treatment, integrative and focused on the individual for children, young adults and adults.
- treating affected individuals differently, not treating different individuals.
- fluent transitions between hospital inpatients, outpatient services and ambulatory services.
- steady set of caregivers all along the therapeutic path.
- increased degree of visiting care by multi-professional teams.
- stronger involvement of affected individuals and their environment during the treatment.
- sub-projects within the model project: personnel and organizational development; funding and finance; services and structures; evaluation and communication

\* after § 64b SGB V

# Explanatory video to model project „ inpatient – day-care – outpatient “



▶ GERMAN: [HTTPS://WWW.YOUTUBE.COM/WATCH?V=JIOBI5c428M](https://www.youtube.com/watch?v=JIOBI5c428M)

▶ ENGLISH: [HTTPS://WWW.YOUTUBE.COM/WATCH?V=CBATDJC\\_xBU&T=1S](https://www.youtube.com/watch?v=CBATDJC_xBU&T=1S)



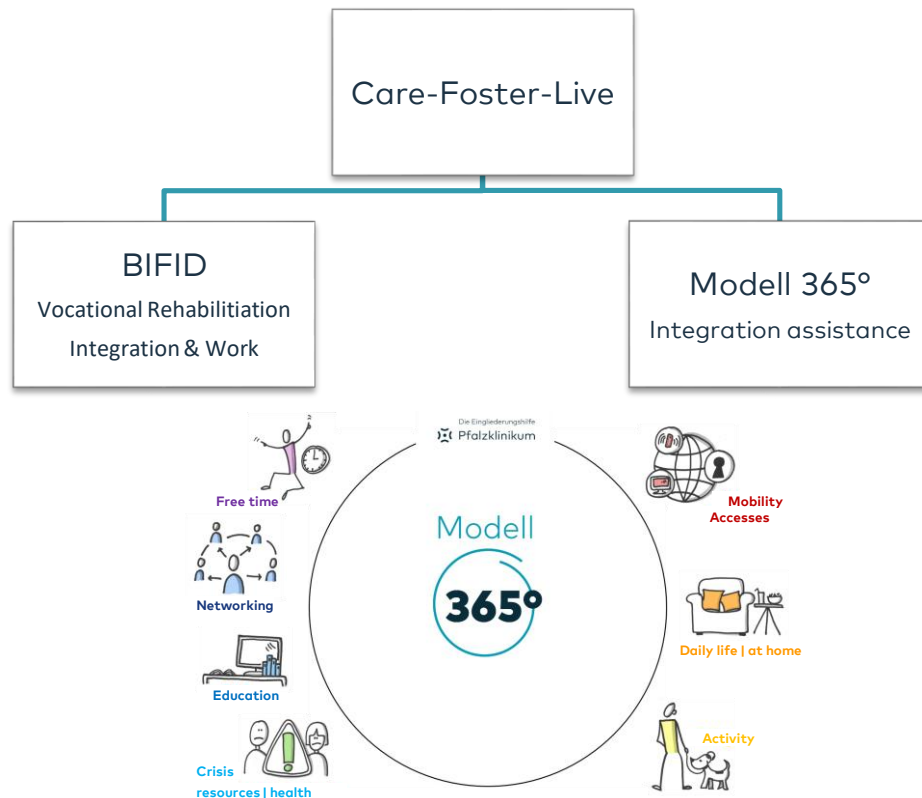
# Project partners in the model project



# Services of integration support

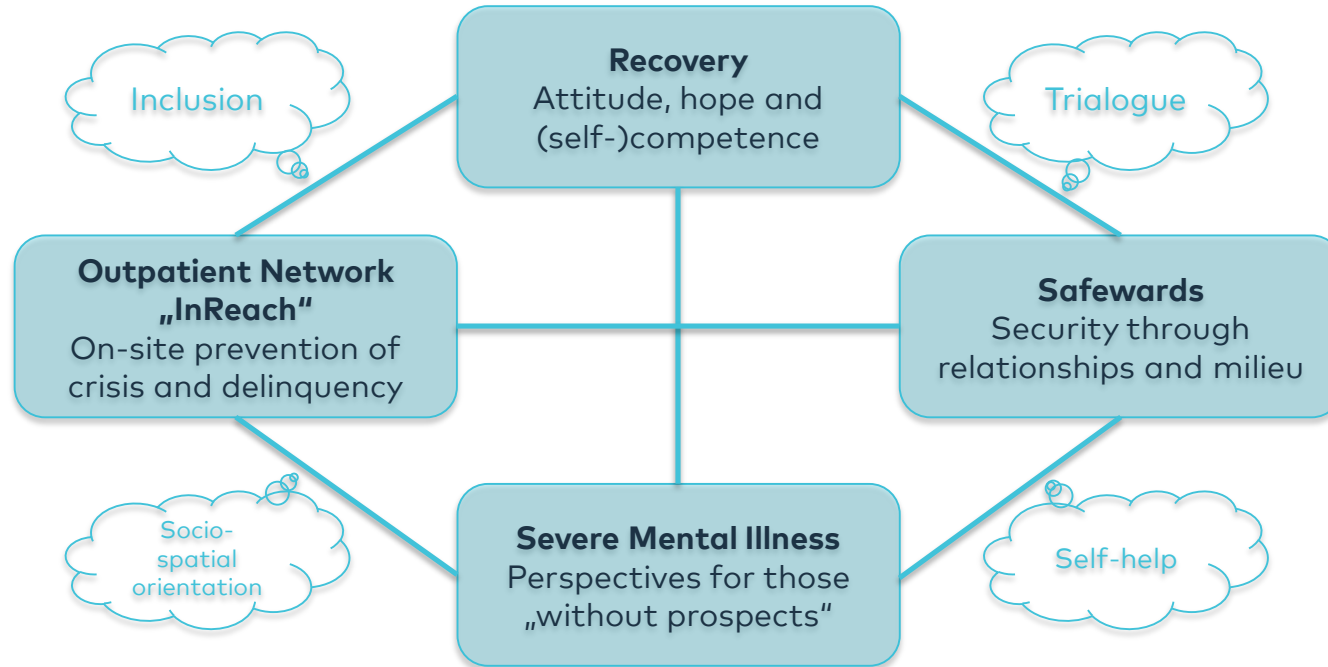


- › separation of the divisions of Care-Foster-Live
- › person-centered approach of assistance services
- › provision of services according to individual need of assistance
- › adaptation of the structures to the model (e. g. management organization)
- › high degree of involvement of peers and employees
- › accounting with new financial logic, reduction of bureaucracy



# Future Concept of Forensic Treatment

Synthesis of living environments: between hospital treatment order and psychosocial treatment



Bezug: „Weiterentwicklung der psychiatrischen Versorgungsstrukturen in Deutschland - Bestandsaufnahme und Perspektiven: Bericht der AG Psychiatrie der AOLG mit den Schwerpunktthemen „Inklusion – Auftrag und Umsetzung, Trialog und Selbsthilfe“ und „Zusammenhang Maßregelvollzug und Allgemeinpsychiatrie.“ Gesundheitsministerkonferenz 2017

# MVZ<sup>1</sup> and MZEB<sup>2</sup> Pfalzlinikum

## MVZ Kaiserslautern

Stiftsplatz 5

✉ info@mvz.pfalzlinikum.de

☎ 0631 31090919

- Psychiatry
- Psychotherapy
- Neurology
- General practitioner

## MVZ Landau Paul- von-Denis-Str.

Paul-von-Denis-Straße 2a

✉ landau@mvz.pfalzlinikum.de

☎ 06341 86079

- Psychiatry
- Psychotherapy
- General practitioner

## MVZ Kusel

Lehnstraße 16

✉ kusel@mvz.pfalzlinikum.de

☎ 06381 3064

- Psychiatry
- Neurology

## MVZ Landau Nordring

Nordring 9

✉ landau@mvz.pfalzlinikum.de

☎ 06341 920644

- Psychotherapy

## MZEB Kaiserslautern

Stiftsplatz 5

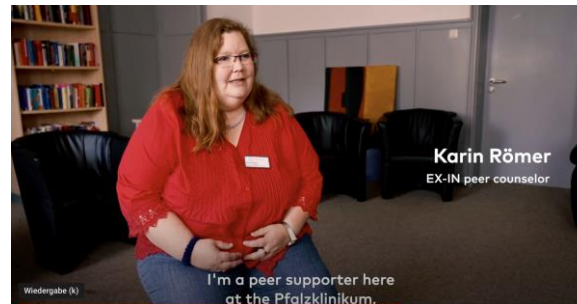
✉ mzeb@mvz.pfalzlinikum.de

☎ 0631 89236482

- General practitioner
- Neurology
- Psychiatry
- Psychotherapy
- Physiotherapy
- Ergotherapy

[www.mvz.pfalzlinikum.de](http://www.mvz.pfalzlinikum.de)

<sup>1</sup>medical service center, <sup>2</sup> medical service center for adults with disability



LEARN MORE ABOUT US IN THIS VIDEO

<https://www.youtube.com/watch?v=2ldW9jAUtI4>



# Triologue and many Network Partners, e.g. ...

## Kaiserslautern inKLusiv



Wir rücken zurecht, was verrückt ist.



Aktionsbündnis  
Seelische Gesundheit



# Contact me!

**Paul Bomke, CEO**

phone: +496349 900-1000

e-mail: [paul.bomke@pfalzklinikum.de](mailto:paul.bomke@pfalzklinikum.de)

internet: [www.pfalzklinikum.de](http://www.pfalzklinikum.de)

LinkedIn:



# Figures and data



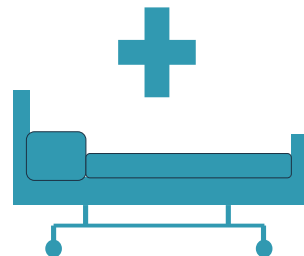
2.570 employees  
thereof 1.775 full-time



15 locations



166 Mio. € Turnover



1.179 beds  
and places

# Facts and figures

|  |             |
|--|-------------|
| » Model project                                  |             |
| › Inpatient beds                                 | 468 beds    |
| › Partial inpatient places                       | 187 places  |
| › Number of insured persons recorded             | 15.524      |
| » Neurology                                      |             |
| › Inpatient beds                                 | 59 beds     |
| › Number of cases                                | 1.606 cases |
| » Forensic treatment                             |             |
| › Inpatient beds – Adults                        | 185 beds    |
| › Inpatient beds – youth                         | 20 beds     |
| › Forensic psychiatry ambulance – Klingenmünster | 49 clients  |
| › Forensic psychiatry ambulance – Neustadt       | 129 clients |
| » Community based mental health services         |             |
| › Places in special living arrangements          | 190 places  |
| » Half-Way-House                                 |             |
| › Inpatient places                               | 10 places   |
| » 3 day-care centers for people with dementia    | 60 places   |