

A close-up photograph of a person's hand touching a large, vibrant abstract painting. The painting features thick, expressive brushstrokes in various colors including purple, blue, green, and orange. The hand is positioned in the lower right quadrant, with fingers gently touching the surface of the artwork. The background is slightly blurred, emphasizing the texture of the paint and the contact between the hand and the canvas.

Community-based mental health services

Care-Assist-Live

Services of Care-Assist-Live

BIFID

VOCATIONAL
REHABILITATION
INTEGRATION & WORK

ACTIVATION &
REINTEGRATION

Modell365°

PARTICIPATION CENTRES

SPECIALISED CARE
SERVICES

DAYCARE

LIVING AND CARE

CURATIVE EDUCATION

TAILOR-MADE OUTREACH
SUPPORT (AHM)

RALIA

SERVICES FOR THE
ELDERLY

DAYCARE CENTRE FOR
THE ELDERLY

COUNSELLING FOR
RELATIVES

Locations



Speyer

Participation centre (PC) and contact point, outreach services and care services

Dahn, Rodalben, Klingenmünster, Speyer

Tailor-made outreach support (AHM)

Bad Bergzabern, Annweiler, Dahn

Regional services for the elderly
Day care centre for the elderly

Bellheim, Wörth, Dahn, Rodalben

Participation centre (PC)

Pirmasens

Decentralised living,
Assistance service for young adults (ASYA)

Maikammer

Curative education residence

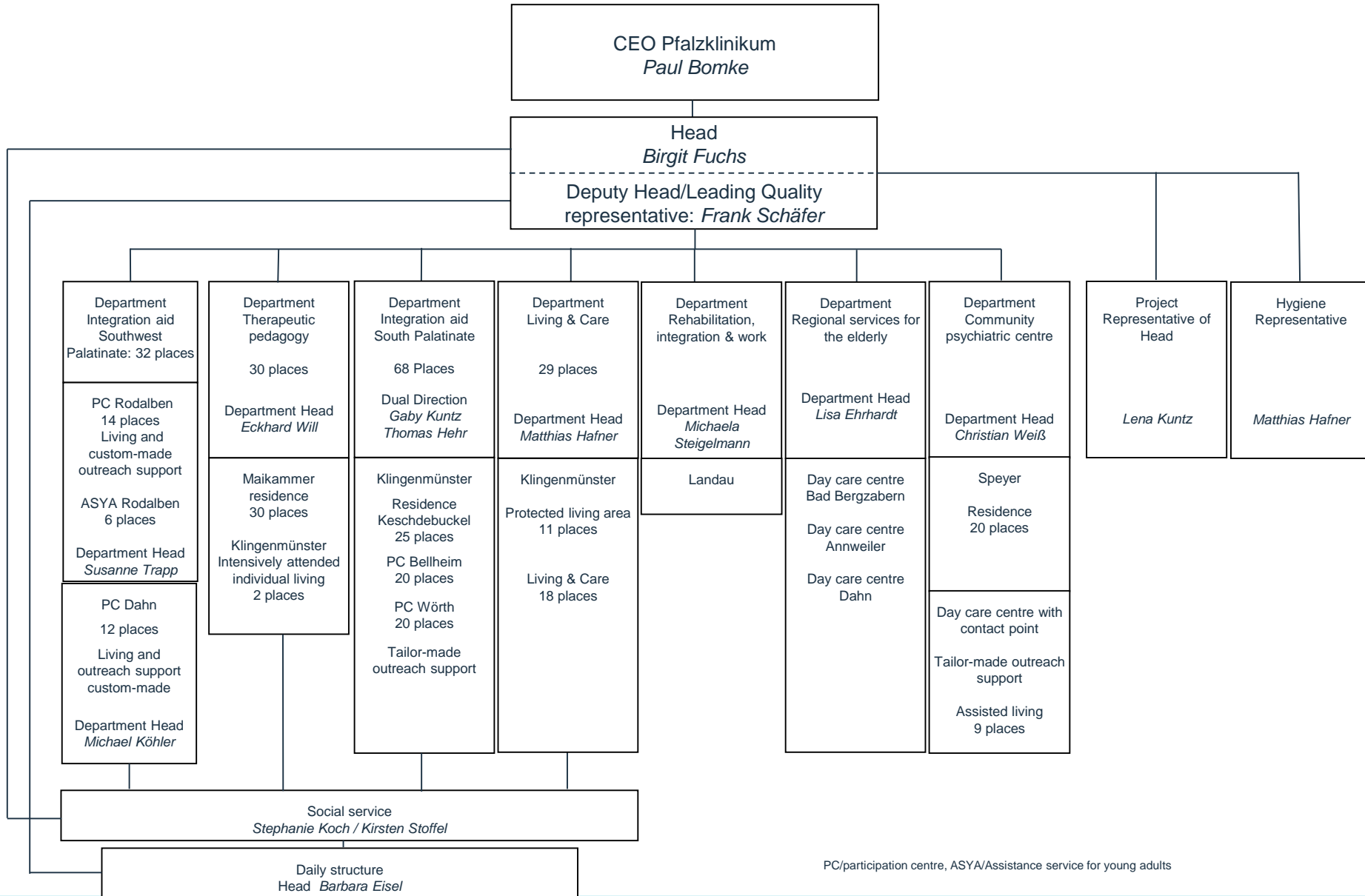
Klingenmünster

Differentiated services

Landau

BIFID – Vocational integration, training and support

Betreuen-Fördern-Wohnen



Mission statement Care-Assist-Live

Leitbild Betreuen-Fördern-Wohnen

Wir glauben an Wunder.

Betreuen-Fördern-Wohnen entwickelt und gestaltet seit seiner Gründung immer wieder neue Angebote, orientiert an den Bedarfen von Menschen mit psychischen Beeinträchtigungen.

Wegweiser für uns sind Verlässlichkeit und Veränderung: Alles bleibt anders. Menschen können mit uns *ihren* Platz im Leben finden.

Wir sind in den Dörfern und Städten der Pfalz daheim. Wir bereichern das Leben in den Gemeinden durch attraktive Orte und Angebote.

Unsere Teams bereiten mit Begeisterung unkomplizierte Wege zu Hilfen und Lösungen. Mit Herz und Verstand schaffen wir Raum für mutige und freidenkende Persönlichkeiten.

Wir sorgen für Wissen – Sie entscheiden, wie wir es einsetzen. Wir haben Respekt vor Menschen, Wissen und im Umgang mit Gütern.

Verständigung ist unser Ziel, wir sind Übersetzer zwischen den Welten. Wir respektieren Selbstbestimmung für jeden Lebensweg. Wir begleiten, vermitteln, beraten und engagieren uns. *Wir glauben an Wunder.*

- In the community
- citizens among citizens
- Individual
- Inclusion-oriented
- Self-determined
- Outreaching
- Resource-oriented
- Against stigmatisation
- Peer to Peer

What are community-based services?

Our community-based services offer support for people with mental impairments in the community, that means outside a clinic setting.

- » Psychiatric services nearby the people's residences.
- » Support comes to the people – not people coming to the support.
- » Inclusion of people with mental impairments in the community.
- » Experience of the diversity of a society.

Services of Integration Support



- › Separation of the divisions of Care-Foster-Live
- › Person-centered approach of assistance services
- › Provision of services according to individual need of assistance
- › Starting 2021
- › High degree of involvement of peers and employees
- › Negotiations about new financial logic with the state Rhineland-Palatinate



Services for people with challenging behaviour

- » Intensively attended individual living
 - › Residence for 2 people who live individually in two semi-detached houses
 - › Intensive care by 1:2 support.
- » Assistance service for young adults
 - › Temporary, intensive living and care offer with 6 places
 - › Following the services of youth welfare for young adults with challenging behaviour
 - › Focus on independent living and work
- » Therapeutic residential community (in planning)
 - › Offer for people with high degree of challenging behaviour who often reach their own limits and the limits of the social space



FOR QUESTIONS AND INFO PLEASE CONTACT

BIRGIT FUCHS (BIRGIT.FUCHS@PFALZKINIKUM.DE)

FRANK SCHÄFER (FRANK.SCHAEFER@PFALZKINIKUM.DE)

LENA KUNTZ (LENA.KUNTZ@PFALZKLINIKUM.DE)

SECRETARIAT CARE-ASSIST-LIVE 0049 6349 900 4501