

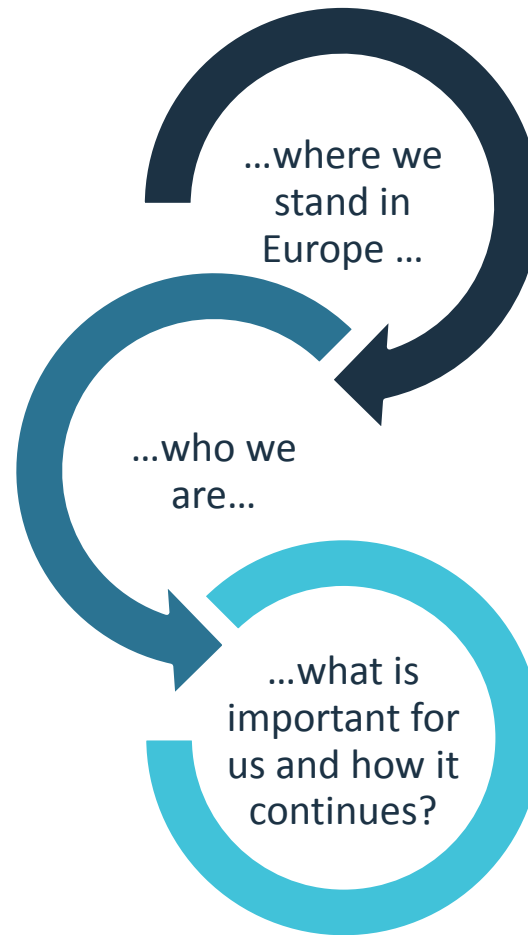
Welcome

Paul Bomke
Chief Executive Officer (CEO)
Pfalzlinikum

**MENTAL
HEALTH
NOW!**

CITIESRISE

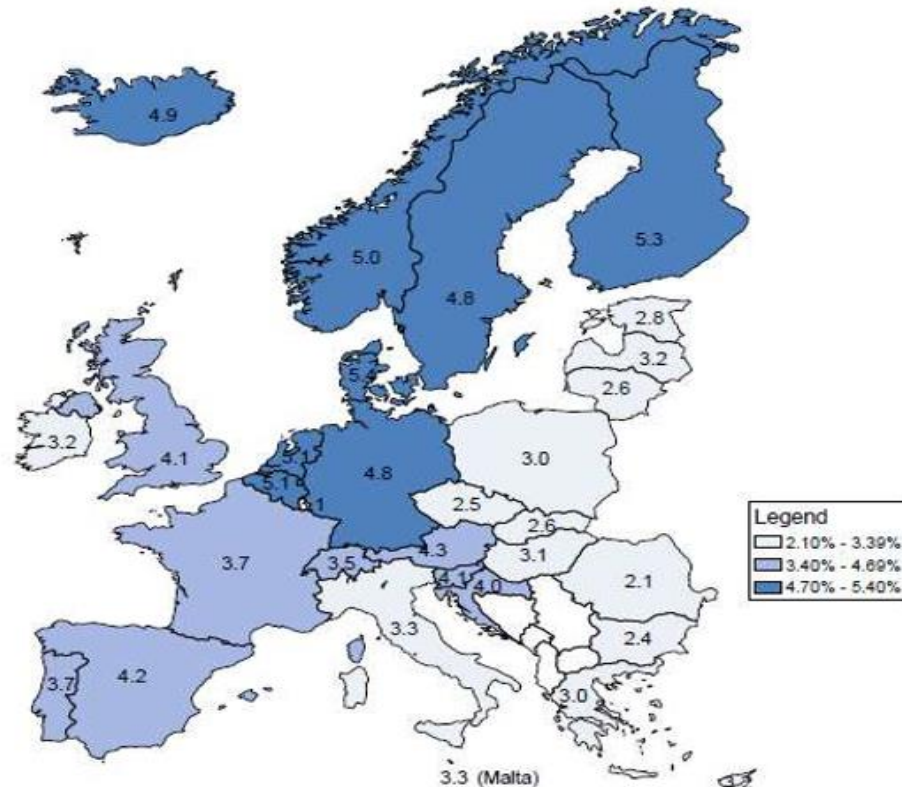
Agenda



... there is much to do in Europe!

The total costs of mental health problems are more than 4% of GDP across EU countries, ranging from 2% to 5%

Estimated direct and indirect costs related to mental health problems across EU countries, as a % of GDP, 2015



Source: OECD estimates based on Eurostat Database and other data sources.

DOWNLOAD (16.04.2019): <https://www.oecd.org/els/health-systems/Health-at-a-Glance-Europe-2018-CHARTSET.pdf>

... let us create transitions!

... we have to create smart transitions!

... we have to create smart transitions!

... we have to create smart transitions!

... we have to create smart transitions!

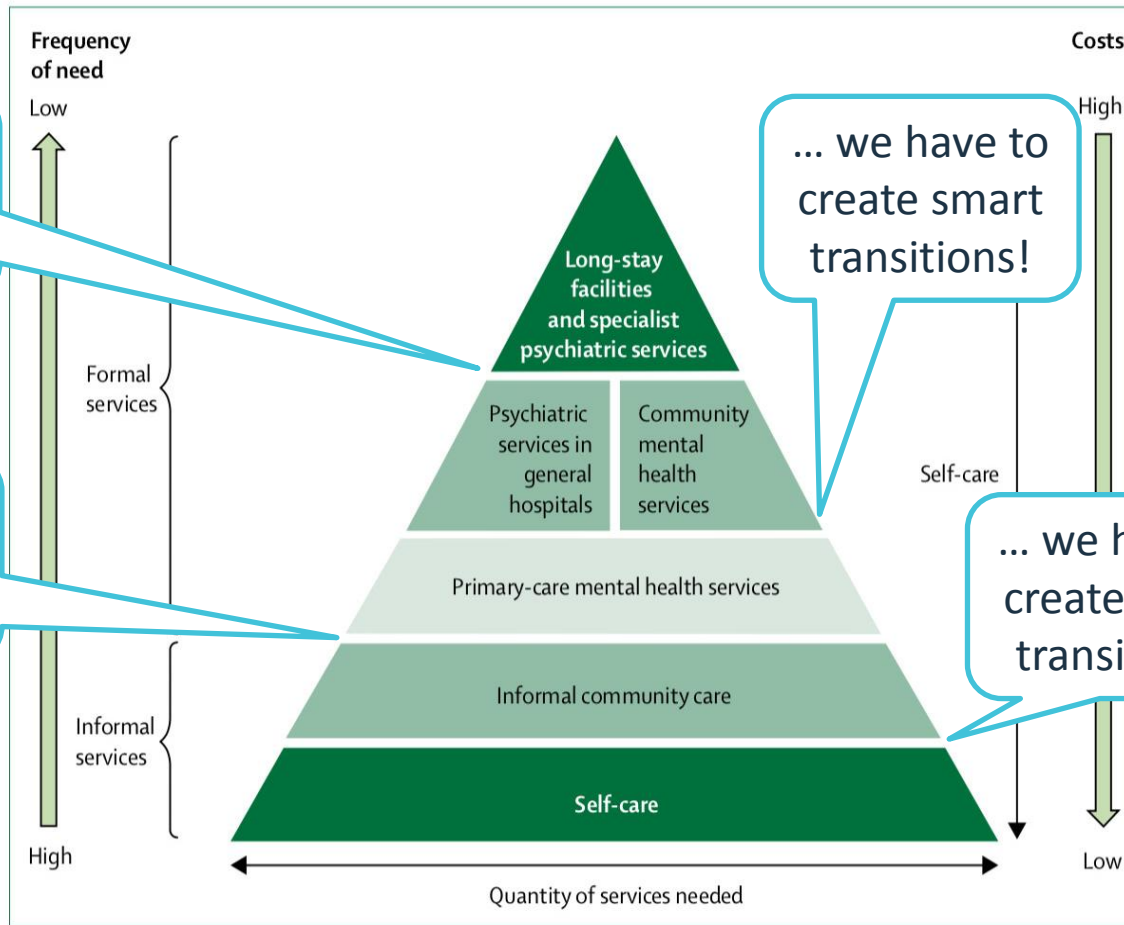


Figure 1: WHO pyramid model

The WHO model is a service organisation pyramid describing an optimal mix of services for mental health. The most costly services are the least frequently needed, whereas the most needed services can be provided at a relatively low cost. Self-care features through all services and all levels of the pyramid. Reproduced from WHO.⁸¹

BHUGRA ET. AL. 2017: THE LANCET PSYCHIATRY COMMISSION, P. 784, NACH: WORLD HEALTH ORGANISATION (WHO) 2009: PYRAMID FOR OPTIMAL MIX OFF MENTAL HEALTH SERVICES.

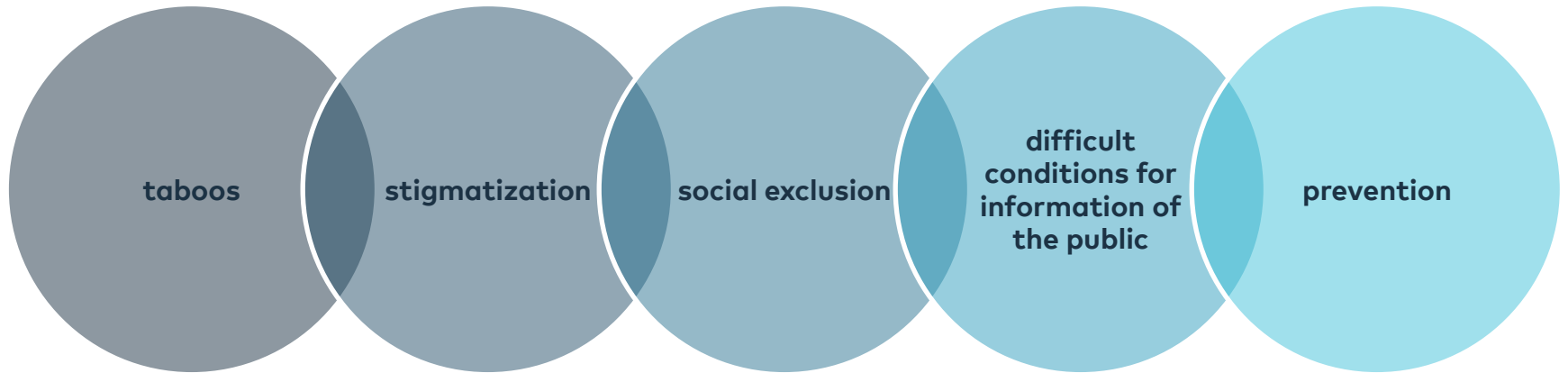
Our mission...



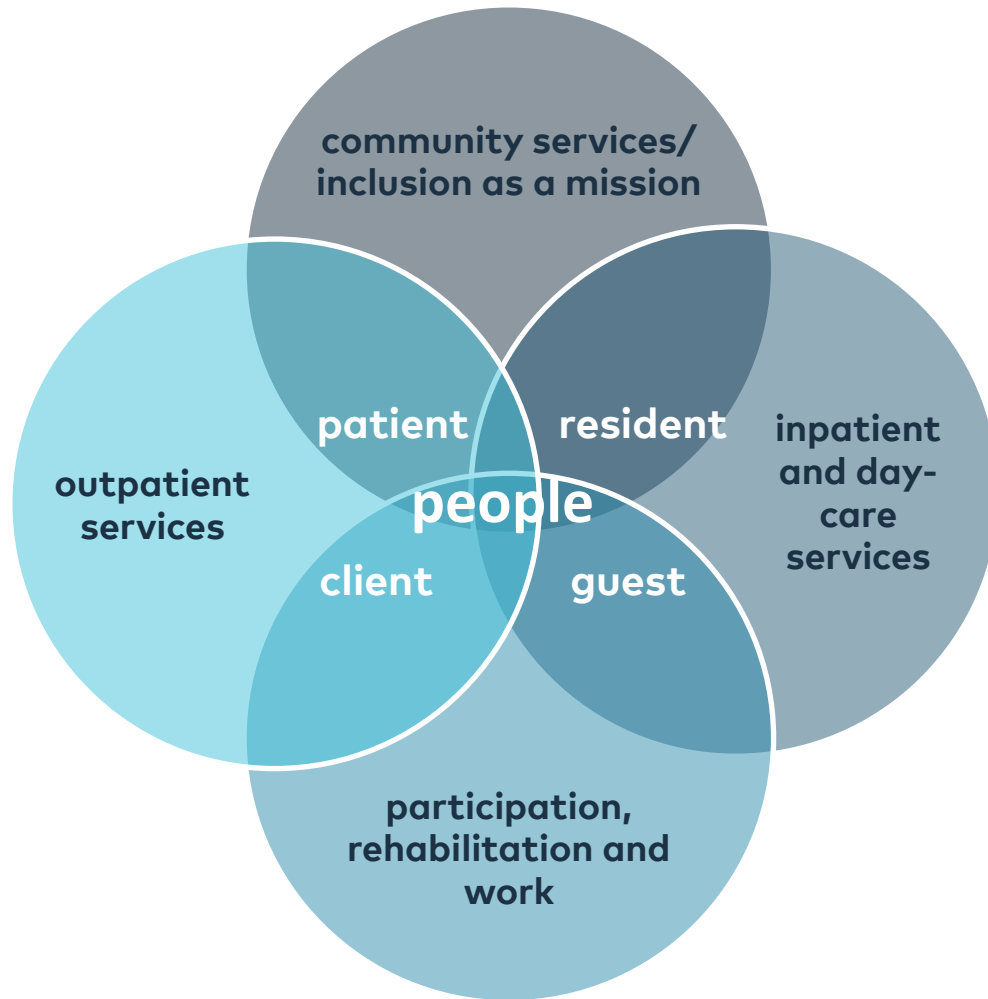
Mental health and Community Services in the Palatinate, Germany



...the special status



Who we are



Where we are



Numbers and facts:

2199 employees, turnover 119 Mio. € (2017), 1.134 beds and places

Mental health services and prevention

departments psychiatry, psychotherapy, psychosomatics (children, adolescents, adults) neurology, forensic treatment for psychiatric offenders, outpatient services, psychiatric community services, "The Palatinate makes itself/you strong – ways to resilience")

status as of 06/2018

Our services of psychiatry, psychotherapy, psychosomatics and neurology in the Palatinate



Kusel

Day-care clinic and psychiatric institutional outpatients' department (PIA), mental health group North-West Palatinate; outpatient psychiatric care

Rockenhausen

(Day-care) clinic and psychiatric institutional outpatients' department (PIA), mental health group North-West Palatinate; outpatient psychiatric care

Kaiserslautern

(Day-care) clinic and psychiatric institutional outpatients' department (PIA), outpatient psychiatric care, mental health group North-West Palatinate

Speyer

Day-care clinic and psychiatric institutional outpatients' department (PIA), outpatient psychiatric care

Landau

Day-care clinic and psychiatric institutional outpatients' department (PIA), outpatient psychiatric care, regional center of psychosomatics in the South Palatinate (RPZ)

Wörth

Day-care clinic and psychiatric institutional outpatients' department (PIA), outpatient psychiatric care

Klingenmünster

Departments for psychiatry and addiction, clinic for geriatric psychiatry, psychosomatics and psychotherapy, clinic for neurology, sleep lab, psychiatric institutional outpatients' departments, outpatient psychiatric care

Our services of child and youth psychiatry, psychosomatics and psychotherapy in the Palatinate



Kaiserslautern

Day-care clinic, psychiatric institutional outpatients' department and other outpatient services

Speyer

Day-care clinic, psychiatric institutional outpatients' department and other outpatient services

Klingenmünster

Differentiated inpatient services for children and adolescents, psychiatric institutional outpatients' department and other outpatient services

Pirmasens

Day-care clinic, psychiatric institutional outpatients' department and other outpatient services

Our community based mental health services



Speyer

Participation center and contact point, outpatient services and support

Dahn, Rodalben, Klingenmünster, Speyer

Custom-made outpatient services

Bad Bergzabern, Annweiler, Dahn

Regional services „Life in old age“ (RALiA)
Day-care centers for senior citizens

Bellheim, Dahn, Rodalben, Wörth

Centers of participation

Pirmasens

Decentralised habitation, assistance for young adults (BJE)

Maikammer

Home for adults (curative education)

Klingenmünster

Differentiated services

Landau, Kaiserslautern

BIFID (= professional integration, training and encouragement)

Forensic treatment of psychiatric offenders in Rhineland-Palatinate, including the services offered by the Pfalzlinikum



Andernach (district of Mayen-Koblenz)
Clinic „Nette-Gut“ for forensic psychiatry*
Forensic treatment of adults

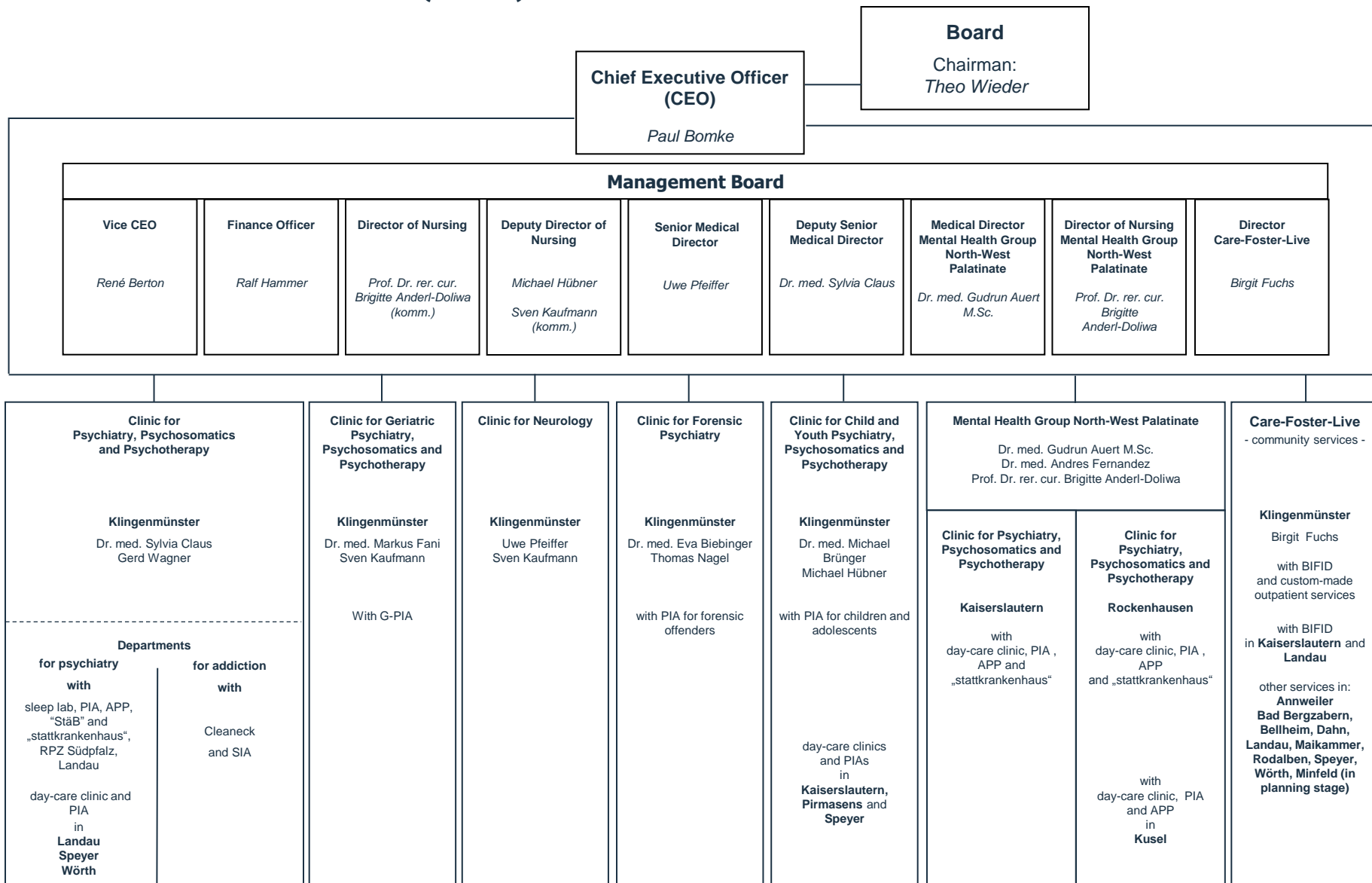
Alzey (Rhein Hessen)
Rhein Hessen specialized clinic*
Forensic treatment of adults

Klingenmünster (Südliche Weinstraße)
Pfalzlinikum for psychiatry and neurology
Forensic treatment of adults

*Forensic treatment of youth
(responsible for § 63 StGB – criminal code – in
the Palatinate, responsible for § 64 StGB in
Rhineland-Palatinate)
and of adolescents (in Rhineland-Palatinate)*

* Facilities of the State Hospital

Facilities of Pfalzlinikum (AdÖR)



PIA: psychiatric institutional outpatients' department; RPZ: regional center of psychosomatics in the South-Palatinate; BIFID: professional rehabilitation and integration; SIA: institutional outpatients' department for addiction, G-PIA: gerontopsychiatric institutional outpatients' department; APP: outpatient psychiatric care;

Numbers and facts

» Employees (total)	2.199
» Fulltime employees	1.597
» Turnover (2017)	Mio. € 119
» Locations in the Palatinate	14
» Inpatient services	510 beds
» 6 day-care psychiatric clinics for adult patients	117 places
» 3 day-care psychiatric clinics for children and adolescents	60 places
» 11 psychiatric institutional outpatients' departments	
» 1 outpatients' department for psychiatric offenders	209 clients
» Home nursing, psychiatric care and support	460 clients
» Occupational rehab	91 clients
» Forensic treatment for psychiatric offenders (adults)	185 places
» Forensic treatment for psychiatric offenders (youth and adolescents)	12 places
» HalfWayHouse (cooperation between community mental health services and forensic treatment for psychiatric offenders)	10 places
» Residential community based mental health services (inpatient)	180 places
» 3 day-care centers for people with dementia	60 places

TOTAL beds and places

1.134

Status as of 12/2017

More figures to our service around the german social code V (inpatient and outpatient services (e.g. hospital treatment)) under:
https://www.pfalzkllinikum.de/fileadmin/user_upload/Dokumente/Qualitaetsmanagement/2016_Gesetzlicher_Qualitaetsbericht_Pfalzkllinikum.pdf

... WHAT IS IMPORTANT FOR US !

NORMAL
WORLD

FOCUSING ON THE
INDIVIDUAL NEEDS

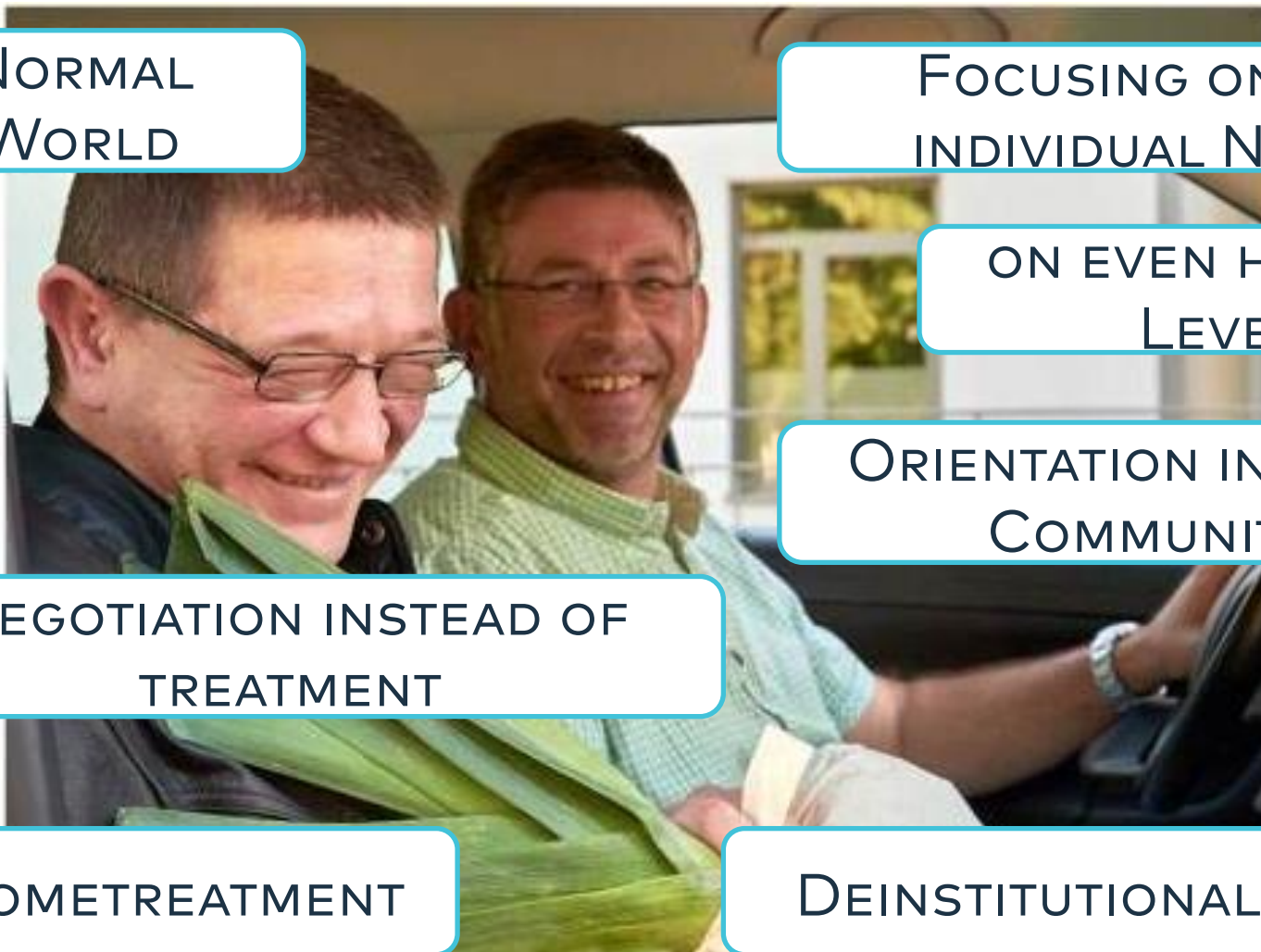
ON EVEN HANDED
LEVEL

ORIENTATION INTO THE
COMMUNITY

NEGOTIATION INSTEAD OF
TREATMENT

HOMETREATMENT

DEINSTITUTIONALIZATION



SOURCE OF THE PHOTO: [HTTPS://WWW.PFALZKLINIKUM.DE/ANGEBOTE/AMBULANT/AUFSUCHENDE-HILFE-NACH-MASS/](https://www.pfalzkllinikum.de/angebote/ambulanz/aufsuchende-hilfe-nach-mass/)

Die Pfalz macht stark.
 WEGE ZUR RESILIENZ.



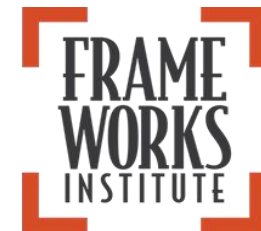
- » Trialogue and
- » many Network Partners, e.g. ...



Kaiserslautern inKLusiv



Wir rücken zurecht, was verrückt ist.



A close-up photograph of a hand painting a vibrant, abstract artwork on a canvas. The hand is positioned in the lower right, with fingers spread, applying paint. The canvas is covered in a dense, multi-colored pattern of brushstrokes in shades of purple, blue, green, orange, and white. The background is slightly blurred, focusing attention on the hand and the painting process.

Contact me!

Paul Bomke, CEO

phone: +496349/900-1000

e-mail: paul.bomke@pfalzkllinikum.de

internet: www.pfalzkllinikum.de

LinkedIn: <https://www.linkedin.com/in/paul-bomke-95095a10>