

A close-up photograph of a person's hand, with blue paint smeared across the palm and fingers, touching a large, vibrant abstract painting. The painting features thick, expressive brushstrokes in various colors including purple, blue, green, orange, and white. The word "Welcome" is overlaid in white text on the right side of the image.

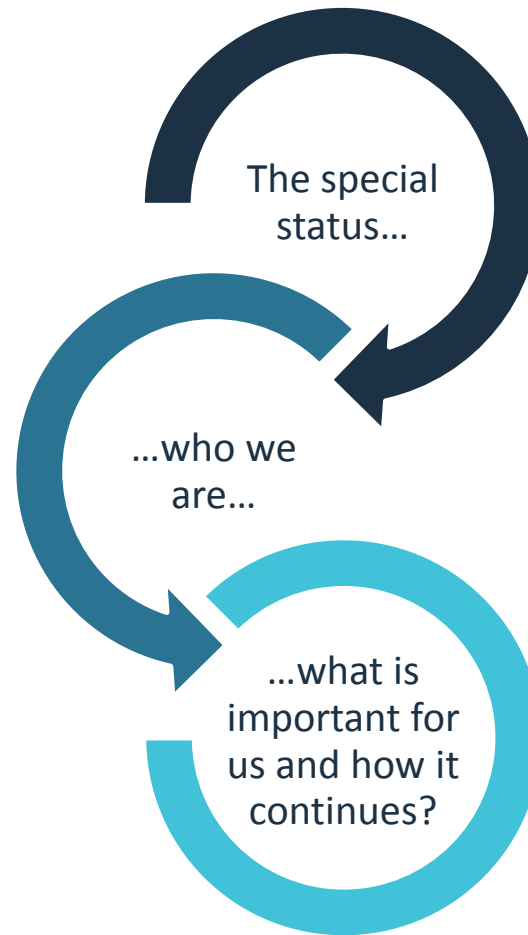
Welcome

Paul Bomke
Chief Executive Officer (CEO)
Pfalzlinikum

**MENTAL
HEALTH
NOW!**

CITIESRISE

Agenda



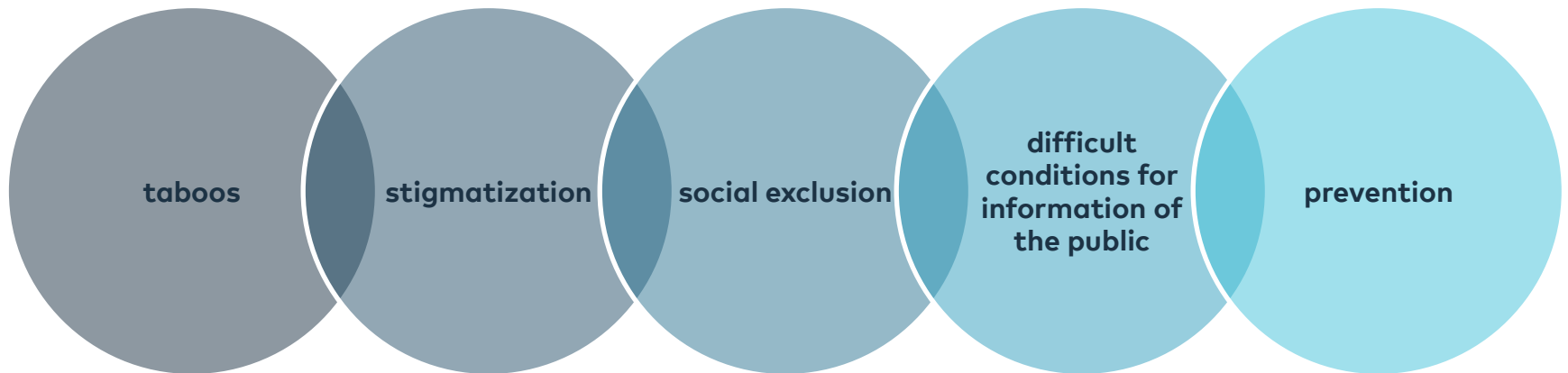
Our mission...



Mental health services in the Palatinate, Germany



...the special status



Who we are



Where we are



Numbers and facts:

2199 employees, turnover 110,8 Mio. € (2017), 1.134 beds and places

Mental health services and prevention

departments psychiatry, psychotherapy, psychosomatics (children, adolescents, adults) neurology, forensic treatment for psychiatric offenders, outpatient services, psychiatric community services, "The Palatinate makes itself/you strong – ways to resilience")

status as of 06/2018

Our services of psychiatry, psychotherapy, psychosomatics and neurology in the Palatinate



Kusel

Day-care clinic and psychiatric institutional outpatients' department (PIA), mental health group North-West Palatinate; outpatient psychiatric care

Rockenhausen

(Day-care) clinic and psychiatric institutional outpatients' department (PIA), mental health group North-West Palatinate; outpatient psychiatric care

Kaiserslautern

(Day-care) clinic and psychiatric institutional outpatients' department (PIA), outpatient psychiatric care, mental health group North-West Palatinate

Speyer

Day-care clinic and psychiatric institutional outpatients' department (PIA), outpatient psychiatric care

Landau

Day-care clinic and psychiatric institutional outpatients' department (PIA), outpatient psychiatric care, regional center of psychosomatics in the South Palatinate (RPZ)

Wörth

Day-care clinic and psychiatric institutional outpatients' department (PIA), outpatient psychiatric care

Klingenmünster

Departments for psychiatry and addiction, clinic for geriatric psychiatry, psychosomatics and psychotherapy, clinic for neurology, sleep lab, psychiatric institutional outpatients' departments, outpatient psychiatric care

Our services of child and youth psychiatry, psychosomatics and psychotherapy in the Palatinate



Kaiserslautern

Day-care clinic, psychiatric institutional outpatients' department and other outpatient services

Speyer

Day-care clinic, psychiatric institutional outpatients' department and other outpatient services

Klingenmünster

Differentiated inpatient services for children and adolescents, psychiatric institutional outpatients' department and other outpatient services

Pirmasens

Day-care clinic, psychiatric institutional outpatients' department and other outpatient services

Our community psychiatric services



Speyer

Participation center and contact point, outpatient services and support

Dahn, Rodalben, Klingenmünster, Speyer

Custom-made outpatient services

Bad Bergzabern, Annweiler, Dahn

Regional services „Life in old age“ (RALiA)
Day-care centers for senior citizens

Bellheim, Dahn, Rodalben

Centers of participation

Pirmasens

Decentralised habitation, assistance for young adults (BJE)

Maikammer

Home for adults (curative education)

Klingenmünster

Differentiated services

Landau, Kaiserslautern

BIFID (= professional integration, training and encouragement)

Forensic treatment of psychiatric offenders in Rhineland-Palatinate, including the services offered by the Pfalzlinikum

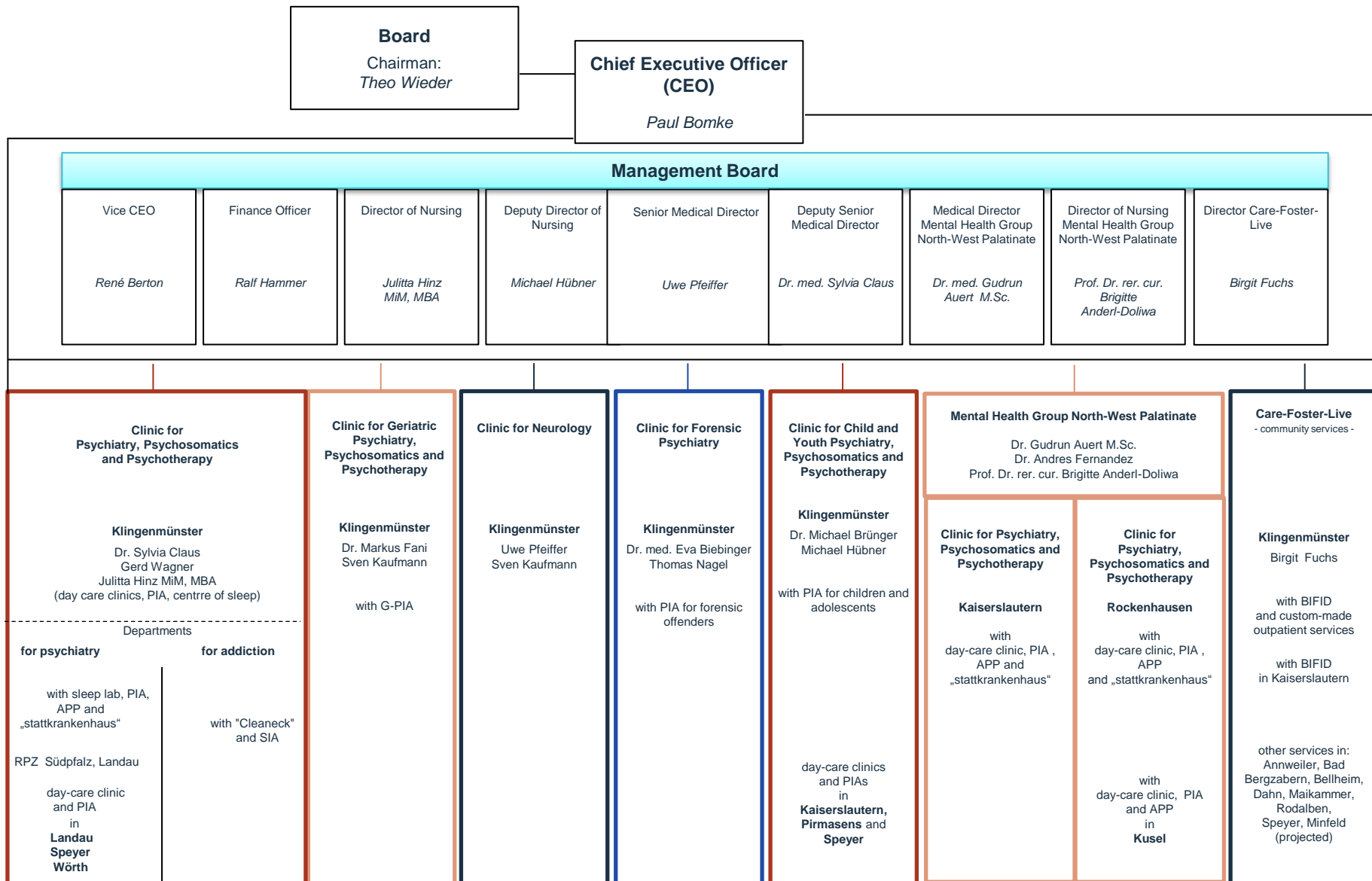


Andernach (district of Mayen-Koblenz)
Clinic „Nette-Gut“ for forensic psychiatry*
Forensic treatment of adults

Alzey (Rheinhessen)
Rheinhessen specialized clinic*
Forensic treatment of adults

Klingenmünster (Südliche Weinstraße)
Pfalzlinikum for psychiatry and neurology
Forensic treatment for adult and adolescent psychiatric offenders
(responsible for § 63 StGB (criminal code) in the Palatinate, responsible for § 64 StGB in Rhineland-Palatinate and for adolescents (in Rhineland-Palatinate))

* Facilities of the State Hospital



PIA: psychiatric institutional outpatients' department; RPZ: regional center of psychosomatics in the South-Palatinate; BIFID: professional rehabilitation and integration; SIA: institutional outpatients' department for addiction, G-PIA: gerontopsychiatric institutional outpatients' department; APP: outpatient psychiatric care;

Numbers and facts

» Employees (total)	2.199
» Fulltime employees	1.97
» Turnover (2015)	Mio. € 110,8
» Locations in the Palatinate	14
» Inpatient services	510 beds
» 6 day-care psychiatric clinics for adult patients	117 places
» 3 day-care psychiatric clinics for children and adolescents	60 places
» 11 psychiatric institutional outpatients' departments	
» 1 outpatients' department for psychiatric offenders	209 clients
» Home nursing, psychiatric care and support	460 clients
» Occupational rehab	91 clients
» Forensic treatment for psychiatric offenders (adults)	185 places
» Forensic treatment for psychiatric offenders (adolescents)	12 places
» Community psychiatric Residential services (inpatient)	180 places
» 3 day-care centers for people with dementia	60 places

TOTAL beds and places

1.134

Status as of 12/2017

... WHAT IS IMPORTANT FOR US !

LIVING
ENVIRONMENT

INDIVIDUAL RELATED

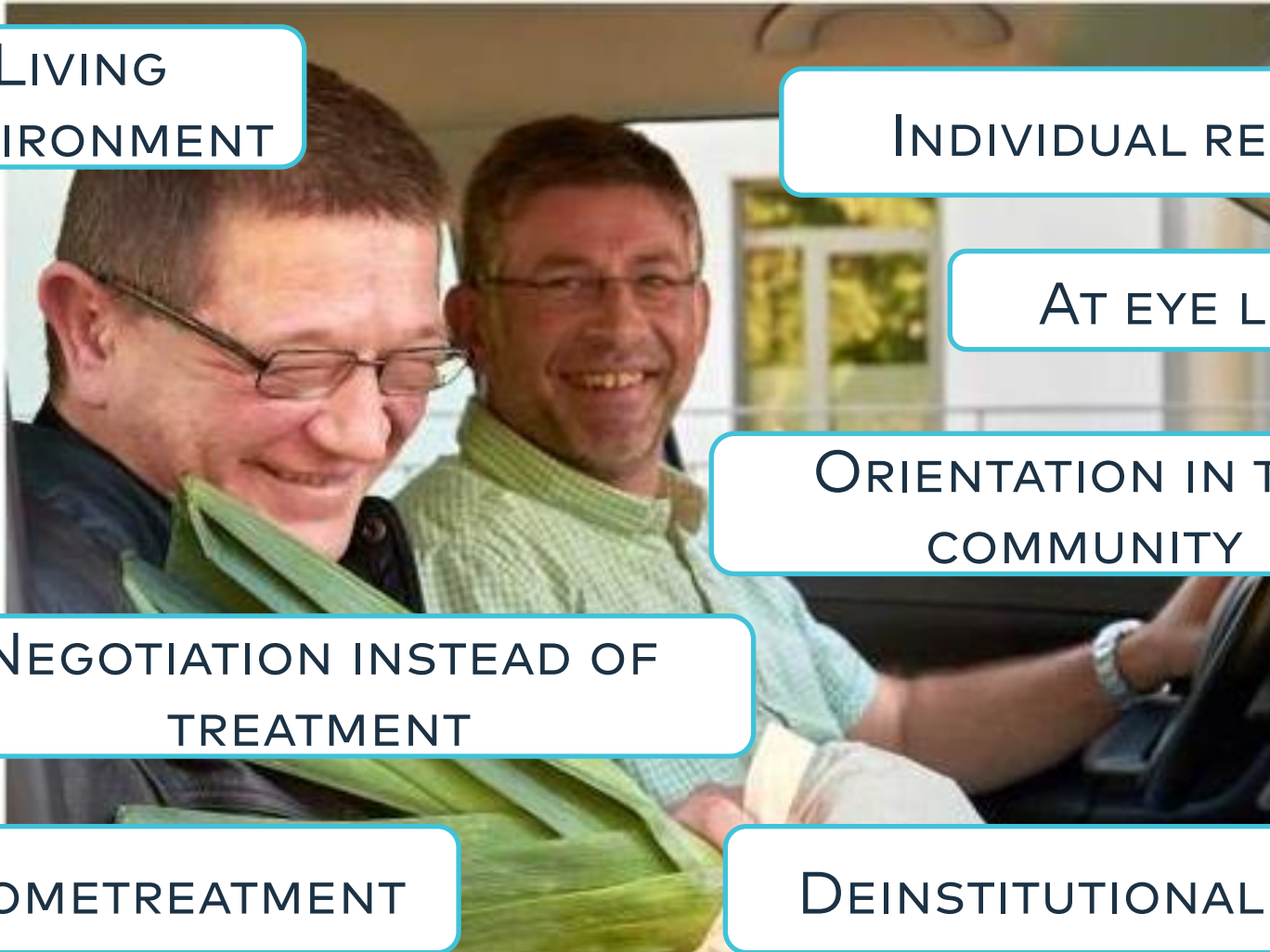
AT EYE LEVEL

ORIENTATION IN THE
COMMUNITY

NEGOTIATION INSTEAD OF
TREATMENT

HOMETREATMENT

DEINSTITUTIONALIZATION



SOURCE OF THE PHOTO: [HTTPS://WWW.PFALZKLINIKUM.DE/ANGEBOTE/AMBULANT/AUFSUCHENDE-HILFE-NACH-MASS/](https://www.pfalzkllinikum.de/angebote/ambulant/aufsuchende-hilfe-nach-mass/)

Projects



- » amongst others cooperation with the donation „Kulturverrückt“
- » the university Koblenz-Landau
- » the institute of technology and work (registered association)
- » the ZI Mannheim
- » trialogue
- » networking



Wir rücken zurecht, was verrückt ist.



Kaiserslautern inKLuSiv

A hand with blue paint on it is touching a colorful abstract painting. The painting features various colors like purple, blue, green, and orange. The hand is positioned on the right side of the image, with the index finger pointing towards the text.

Contact me!

Paul Bomke, CEO

phone: 06349/900-1000

e-mail: paul.bomke@pfalzklinikum.de

internet: www.pfalzklinikum.de