

A close-up photograph of a hand with blue paint on the fingers and palm, touching a vibrant, abstract painting. The painting features vertical streaks of purple, blue, green, and orange, with a more colorful, multi-colored area to the right. The word "Welcome" is overlaid in white text.

# Welcome

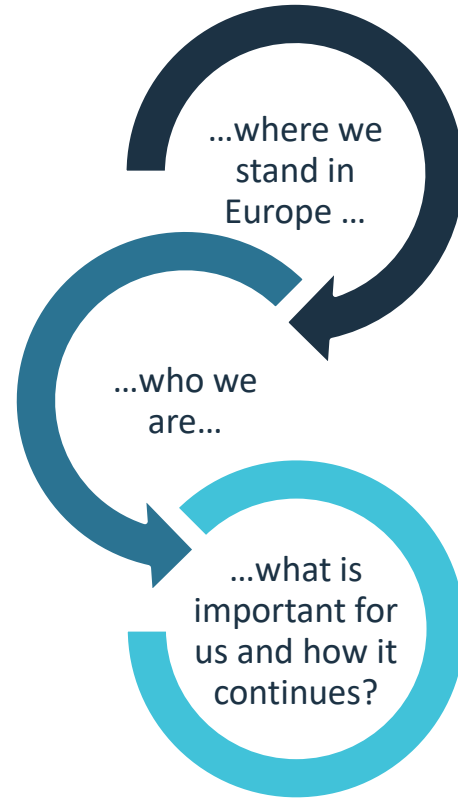
Paul Bomke  
Chief Executive Officer (CEO)  
Pfalzkllinikum

**MENTAL  
HEALTH  
NOW!**

**CITIESRISE**



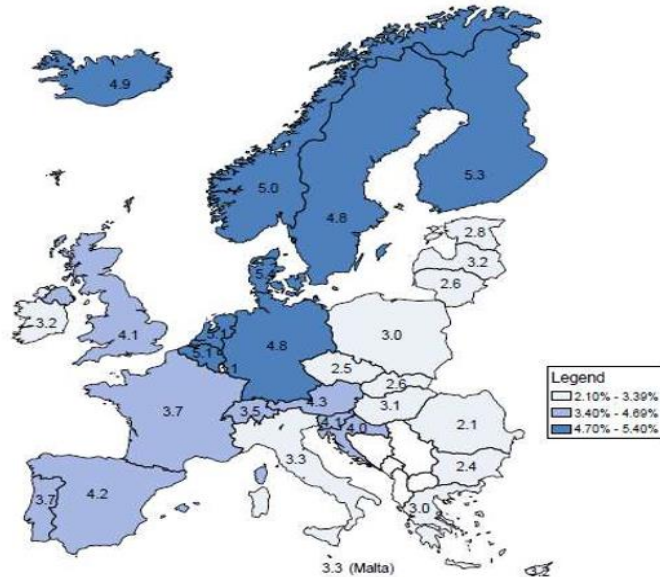
# Agenda



# ... there is much to do in Europe!

## The total costs of mental health problems are more than 4% of GDP across EU countries, ranging from 2% to 5%

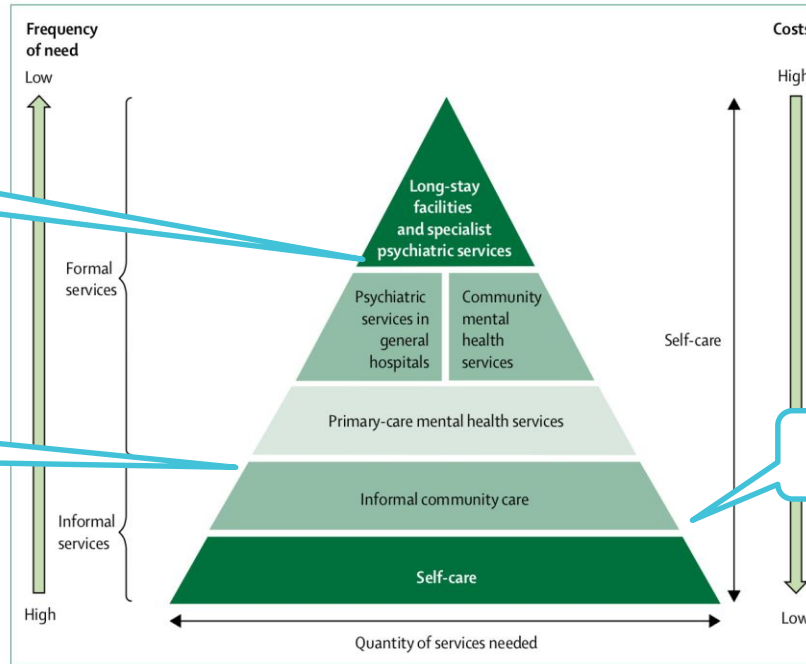
Estimated direct and indirect costs related to mental health problems across EU countries, as a % of GDP, 2015



Source: OECD estimates based on Eurostat Database and other data sources.

Download (16.04.2019): <https://www.oecd.org/els/health-systems/Health-at-a-Glance-Europe-2018-CHARTSET.pdf>

# ... let us create transitions!



**Figure 1: WHO pyramid model**

The WHO model is a service organisation pyramid describing an optimal mix of services for mental health. The most costly services are the least frequently needed, whereas the most needed services can be provided at a relatively low cost. Self-care features through all services and all levels of the pyramid. Reproduced from WHO.<sup>81</sup>



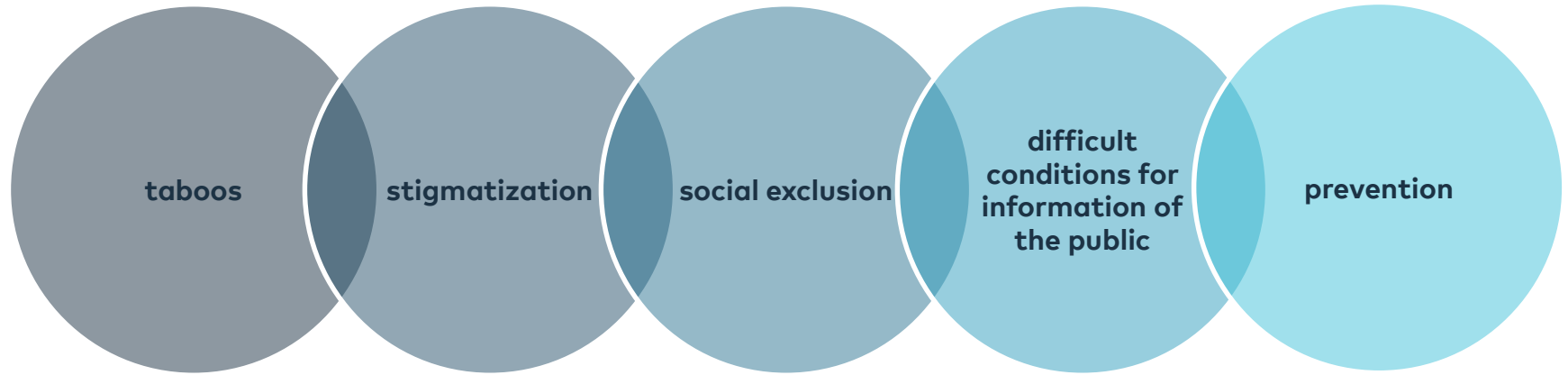
# Our mission...



## Mental health and Community Services in the Palatinate, Germany



# ...the special status



# Who we are





# Where we are



## Numbers and facts:

2301 employees, turnover 117,2 Mio. € (2018),

1.172 beds and places

Mental health services and prevention

departments psychiatry, psychotherapy, psychosomatics (children, adolescents, adults) neurology, forensic treatment for psychiatric offenders, outpatient services, psychiatric community services, "The Palatinate makes itself/you strong – ways to resilience")

*status as of 12/2018*

# Our services of psychiatry, psychotherapy, psychosomatics and neurology in the Palatinate



## **Kusel**

Day-care clinic and psychiatric institutional outpatients' department (PIA), mental health group North-West Palatinate; outpatient psychiatric care

## **Rockenhausen**

(Day-care) clinic and psychiatric institutional outpatients' department (PIA), mental health group North-West Palatinate; outpatient psychiatric care

## **Kaiserslautern**

(Day-care) clinic and psychiatric institutional outpatients' department (PIA), outpatient psychiatric care, mental health group North-West Palatinate

## **Speyer**

Day-care clinic and psychiatric institutional outpatients' department (PIA), outpatient psychiatric care

## **Landau**

Day-care clinic and psychiatric institutional outpatients' department (PIA), outpatient psychiatric care, regional center of psychosomatics in the South Palatinate (RPZ)

## **Wörth**

Day-care clinic and psychiatric institutional outpatients' department (PIA), outpatient psychiatric care

## **Klingenmünster**

Departments for psychiatry and addiction, clinic for geriatric psychiatry, psychosomatics and psychotherapy, clinic for neurology, sleep lab, psychiatric institutional outpatients' departments, outpatient psychiatric care

# Our services of child and youth psychiatry, psychosomatics and psychotherapy in the Palatinate



## **Kaiserslautern**

Day-care clinic, psychiatric institutional outpatients' department and other outpatient services

## **Speyer**

Day-care clinic, psychiatric institutional outpatients' department and other outpatient services

## **Klingenmünster**

Differentiated inpatient services for children and adolescents, psychiatric institutional outpatients' department and other outpatient services

## **Pirmasens**

Day-care clinic, psychiatric institutional outpatients' department and other outpatient services

# Our community based mental health services



## **Speyer**

Participation center and contact point, outpatient services and support

## **Dahn, Rodalben, Klingenmünster, Speyer**

Custom-made outpatient services

## **Bad Bergzabern, Annweiler, Dahn**

Regional services „Life in old age“ (RALiA)  
Day-care centers for senior citizens

## **Bellheim, Dahn, Rodalben, Wörth**

Centers of participation

## **Pirmasens**

Decentralised habitation, assistance for young adults (BJE)

## **Maikammer**

Home for adults (curative education)

## **Klingenmünster**

Differentiated services

## **Landau**

BIFID (= professional integration, training and encouragement)

# Forensic treatment of psychiatric offenders in Rhineland-Palatinate, including the services offered by the Pfalzlinikum



## **Andernach (district of Mayen-Koblenz)**

Clinic „Nette-Gut“ for forensic psychiatry\*

*Forensic treatment of adults*

## **Alzey (Rheinhessen)**

Rheinhessen specialized clinic\*

*Forensic treatment of adults*

## **Klingenmünster (Südliche Weinstraße)**

Pfalzlinikum for psychiatry and neurology

*Forensic treatment of adults*

*Forensic treatment of youth*

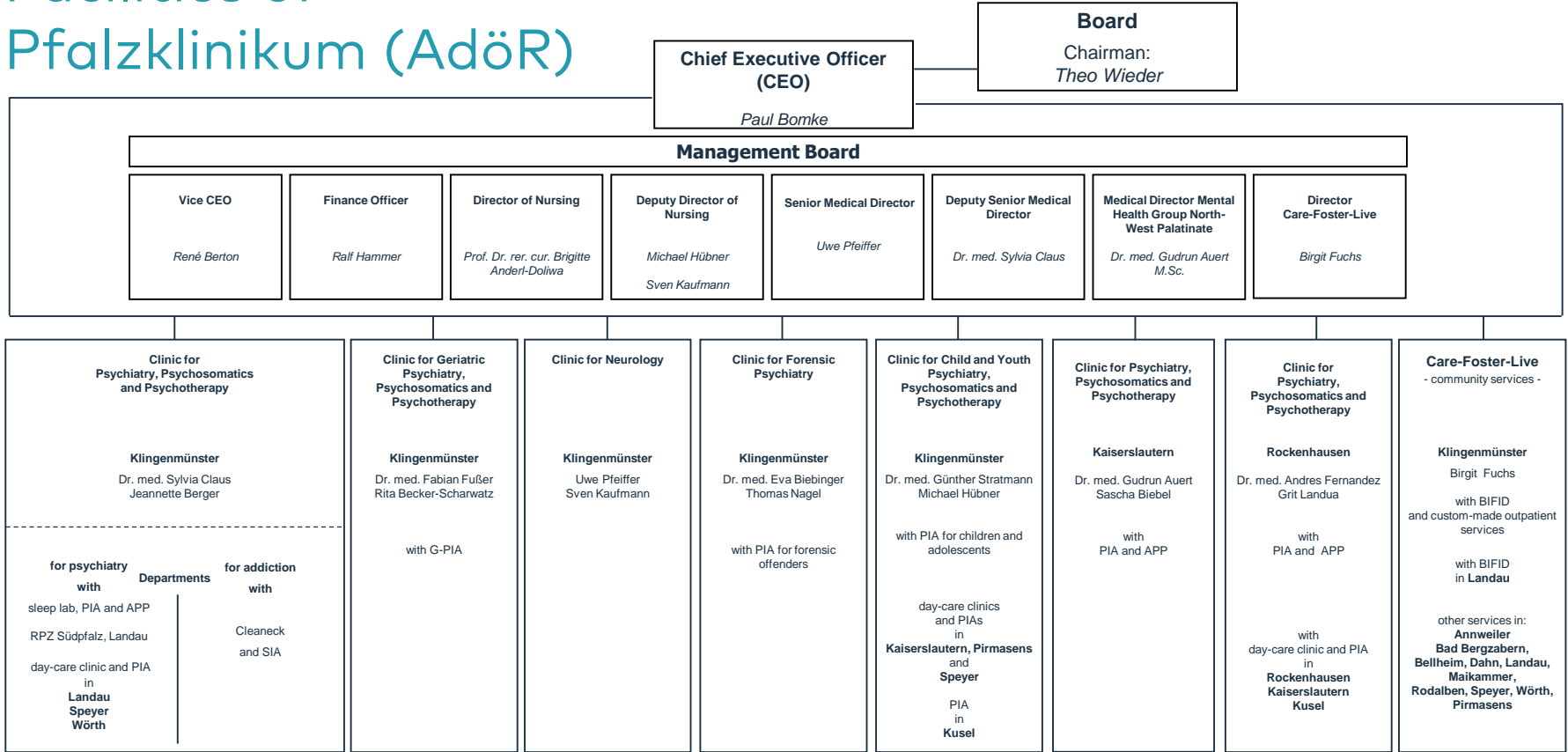
*(responsible for § 63 StGB – criminal code – in the Palatinate, responsible for § 64 StGB in Rhineland-Palatinate)*

*and of adolescents (in Rhineland-Palatinate)*

\* Facilities of the State Hospital



# Facilities of Pfalzlinikum (AdöR)



PIA: psychiatric institutional outpatients' department; RPZ: regional center of psychosomatics in the South-Palatinate; BIFID: professional rehabilitation and integration; SIA: institutional outpatients' department for addiction, G-PIA: gerontopsychiatric institutional outpatients' department; APP: outpatient psychiatric care; StäB: ward-equivalent treatment

# Numbers and facts

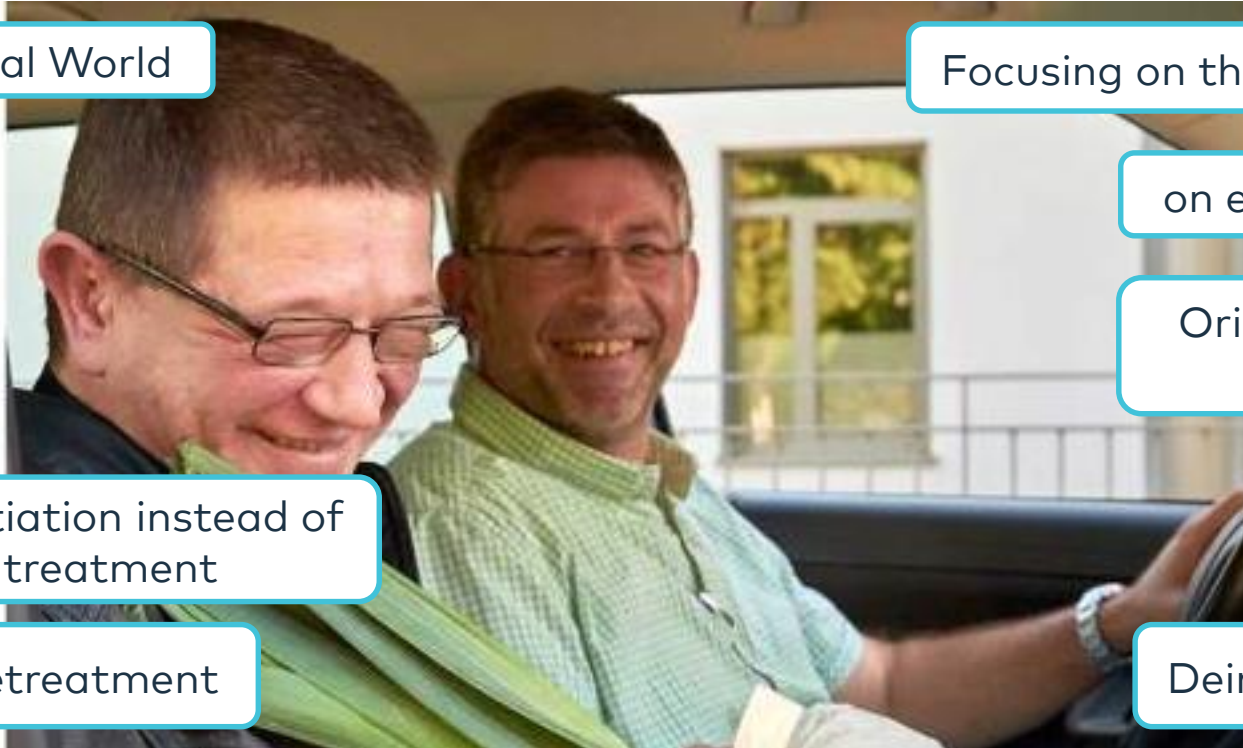
»	Employees (total)		2.301
»	Fulltime employees		1.659
»	Turnover (2018)	Mio. €	117
»	Locations in the Palatinate		14
»	Inpatient services	beds	510
»	6 day-care psychiatric clinics for adult patients	places	117
»	4 day-care psychiatric clinics for children and adolescents	places	65
»	11 psychiatric institutional outpatients' departments		
»	1 outpatients' department for psychiatric offenders	clients	196
»	Home nursing, psychiatric care and support	clients	284
»	Occupational rehab clients		72
»	Forensic treatment for psychiatric offenders (adults)	places	210
»	Forensic treatment for psychiatric offenders (youth)	places	20
»	HalfWayHouse (cooperation between community mental health services and forensic treatment for psychiatric offenders)	places	10
»	Residential community based mental health services (inpatient)	places	180
»	3 day-care centers for people with dementia	places	60
	<b>TOTAL beds and places</b>		<b>1.172</b>

Status as of 12/2018

More figures to our service around the german social code V (inpatient and outpatient services (e.g. hospital treatment) ) under:

[www.pfalzkllinikum.de/fileadmin/user\\_upload/Dokumente/Qualitaetsmanagement/2019-11-07\\_Gesetzlicher\\_Qualitaetsbericht\\_2018.pdf](http://www.pfalzkllinikum.de/fileadmin/user_upload/Dokumente/Qualitaetsmanagement/2019-11-07_Gesetzlicher_Qualitaetsbericht_2018.pdf) (document in german)

# ... was uns wichtig ist !



Normal World

Focusing on the individual Needs

on even handed Level

Orientation into the  
Community

Negotiation instead of  
treatment

Hometreatment

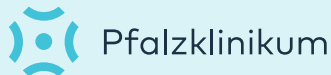
Deinstitutionalization

Bildquelle: [www.pfalzkrankenhaus.de/angebote/ambulanz/aufsuchende-hilfe-nach-mass/](http://www.pfalzkrankenhaus.de/angebote/ambulanz/aufsuchende-hilfe-nach-mass/)

Dialogue and many Network Partners, e.g. ...



## Kaiserslautern inKLusiv



A hand with blue paint on it is touching a colorful abstract painting. The background is a vibrant, multi-colored abstract artwork with various shades of blue, purple, green, and red.

# Contact me!

**Paul Bomke, CEO**

phone: +496349/900-1000

e-mail: [paul.bomke@pfalzklinikum.de](mailto:paul.bomke@pfalzklinikum.de)

internet: [www.pfalzklinikum.de](http://www.pfalzklinikum.de)

LinkedIn: <https://www.linkedin.com/in/paul-bomke-95095a10>